



Process Flow, Mechanical

Applicable for EC400 and EC400g

Contents

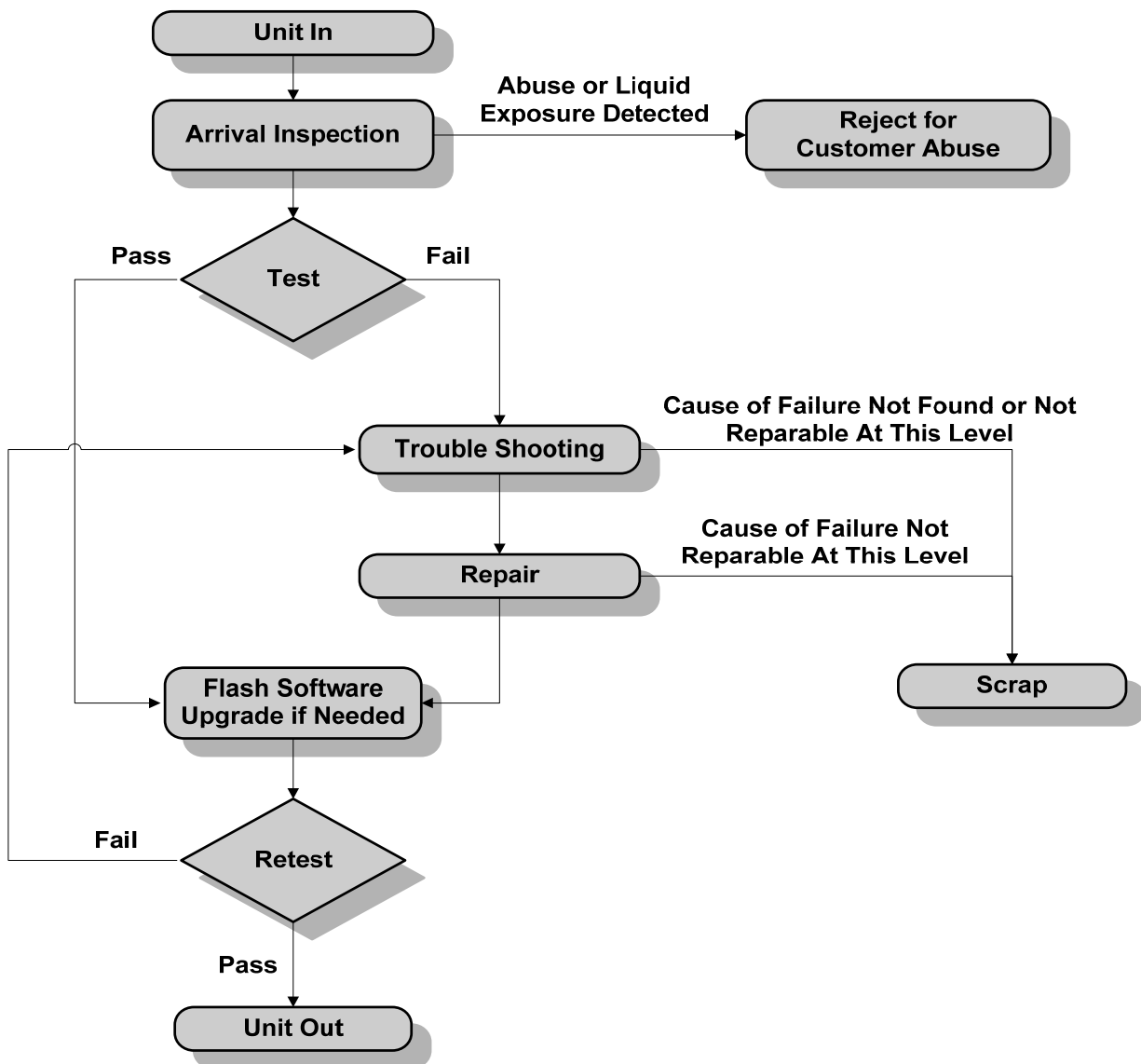
1	General	2
2	Process Flow	2
3	Process Descriptions.....	3
4	Revision History	3



1 General

This document describes the basic process flow to be followed when repairing the applicable product(s). The main repair documents that apply for each of the process areas are also identified. The actual flow of this product through a repair center may vary slightly from that specified in the basic process flow.

2 Process Flow





3 Process Descriptions

Process	Key Reference Documents	Comments
Unit In	N/A	Process the unit according to local requirements.
Arrival Inspection	Test Instruction, Mechanical	Inspect for liquid intrusion and signs of abuse.
Reject For Customer Abuse	N/A	If abuse or liquid exposure is detected, reject the unit according to local requirements.
Test	Test Instruction, Mechanical Equipment List, Mechanical Installation Instruction, Mechanical	Try to confirm the customer's complaint or identify a failure by performing the functional tests.
Trouble Shooting	Trouble Shooting Guide, Mechanical	Try to determine the cause of the failure.
Repair	Working Instruction, Mechanical Part List, Mechanical	Try to repair the unit.
Flash Software Upgrade if Needed	Test Instruction, Mechanical	Flash the latest software into the unit if required or needed.
Scrap	N/A	If the cause of the failure cannot be found or the failure cannot be repaired, then scrap the unit according to local requirements.
Retest	Test Instruction, Mechanical	Retest the unit to confirm that it is working properly.
Unit Out	N/A	Process and package the unit according to local requirements.

4 Revision History

Rev.	Date	Changes / Comments
1	June 18, 2008	Initial Release